

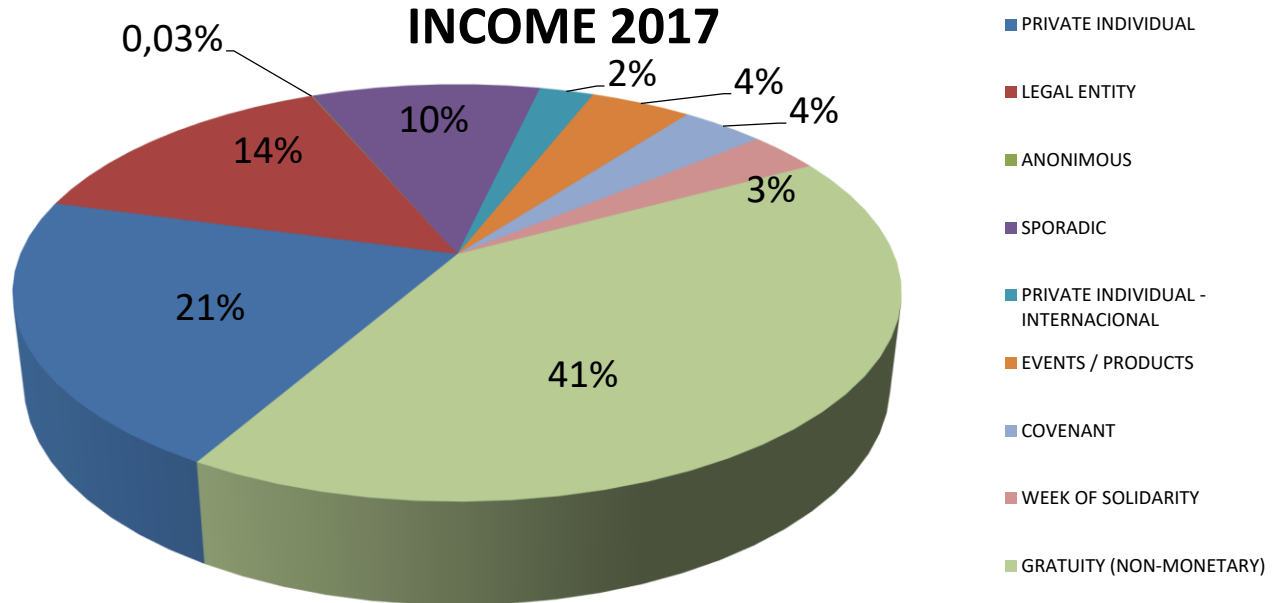
# STATEMENT OF EXPENSES AND INCOME FOR THE PERIOD - 2017

## BALANCE SHEET 2017 TERRA LIVRE - REVENUE 2017

12/29/2017 US\$1,00 = R\$3,30

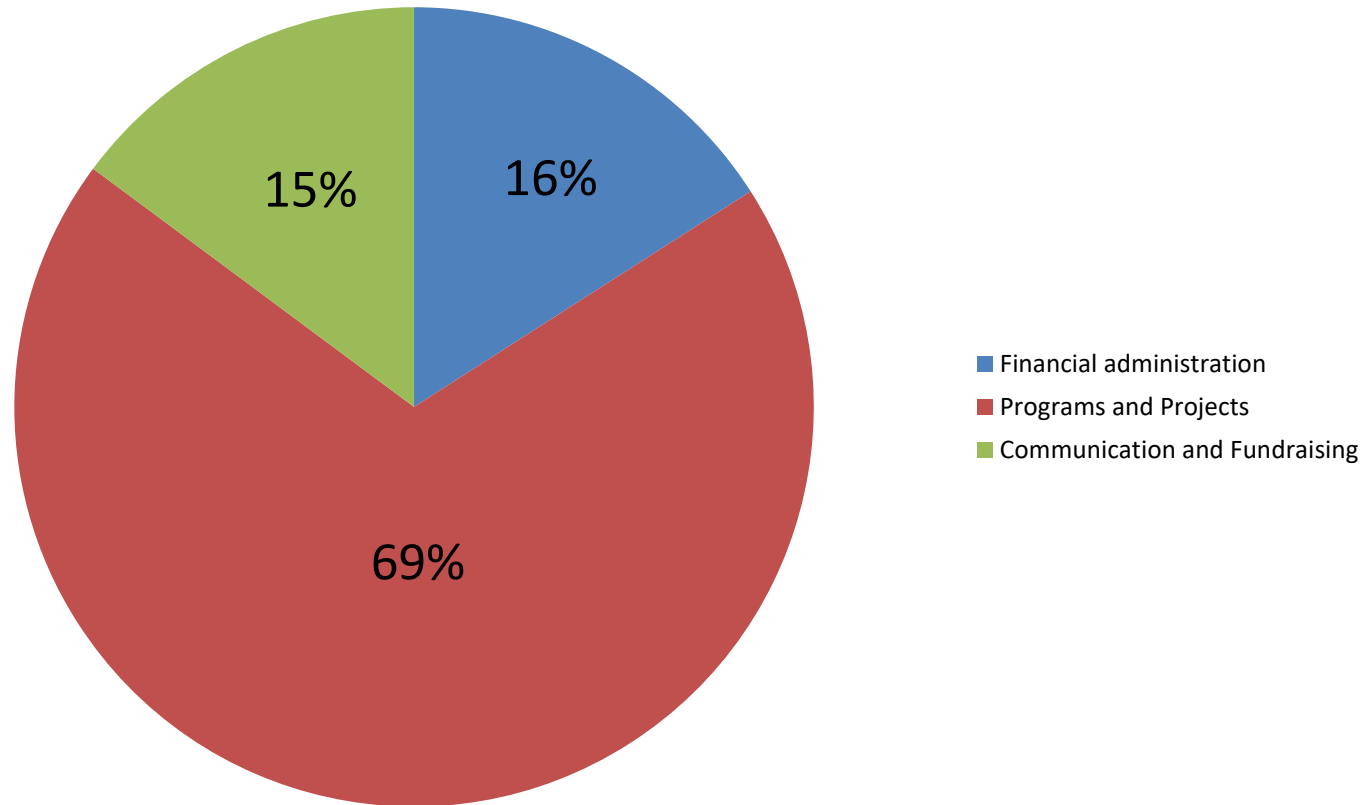
Types of Donation	Jan	Feb	Mar	Apr	May	Jun	Jul	Aug	Sep	Oct	Nov	Dec	TOTAL
<b>MONETARY TRANSACTIONS</b>													
PRIVATE INDIVIDUAL	2.768,56	3.684,43	3.937,09	3.335,80	3.723,89	4.060,04	3.266,08	3.711,54	3.050,98	4.078,20	3.396,68	4.062,21	43.075,50
LEGAL ENTITY	727,27	2.293,69	2.590,90	1.651,51	2.166,66	1.893,93	3.145,08	3.060,60	2.651,51	2.696,96	2.675,77	4.045,45	29.599,33
ANONIMOUS			66,66					3,36					70,02
SPORADIC	81,93		2.072,16	1.393,93	399,43	943,69	7.716,70	3.640,01	607,29	30,80	1.058,96	2.551,96	20.496,86
PRIVATE INDIVIDUAL - INTERNACIONAL					2.424,24	2.038,18		269,69	128,54				4.860,65
EVENTS / PRODUCTS	127,57	153,22	1.434,40	5,45	19,39	460,80			52,87	4,24		6.763,61	9.021,55
COVENANT		560,00	483,63	1.043,63	700,00	700,00	668,18	700,00	636,36	668,18	668,18	636,36	7.464,52
WEEK OF SOLIDARITY		1.378,78	5.091,15										6.469,93
<b>TOTAL - MONETARY</b>	<b>3.705,33</b>	<b>8.070,12</b>	<b>15.675,99</b>	<b>7.430,32</b>	<b>9.433,61</b>	<b>10.096,64</b>	<b>14.796,04</b>	<b>11.385,20</b>	<b>7.127,55</b>	<b>7.478,38</b>	<b>7.799,59</b>	<b>18.059,59</b>	<b>121.058,36</b>
<b>NON-MONETARY TRANSACTIONS</b>													
GRATUITY (NON-MONETARY)	3.562,14	5.303,00	30.599,32	6.362,84	4.562,93	4.410,57	2.906,06	3.968,40	4.340,52	5.414,73	7.483,20	6.058,18	84.971,89
<b>GRAND TOTAL</b>	<b>7.267,47</b>	<b>13.373,12</b>	<b>46.275,31</b>	<b>13.793,16</b>	<b>13.996,54</b>	<b>14.507,21</b>	<b>17.702,10</b>	<b>15.353,60</b>	<b>11.468,07</b>	<b>12.893,11</b>	<b>15.282,79</b>	<b>24.117,77</b>	<b>206.030,25</b>

INCOME (Donations)	US\$	%
PRIVATE INDIVIDUAL	43.075,50	21%
LEGAL ENTITY	29.599,33	14%
ANONIMOUS	70,02	0,03%
SPORADIC	20.496,86	10%
PRIVATE INDIVIDUAL - INTERNACIONAL	4.860,65	2%
EVENTS / PRODUCTS	9.021,55	4%
COVENANT	7.464,52	4%
WEEK OF SOLIDARITY	6.469,93	3%
GRATUITY (NON-MONETARY)	84.971,89	41%
<b>GRAND TOTAL</b>	<b>206.030,25</b>	<b>100%</b>



## BALANCE SHEET 2017 TERRA LIVRE - EXPENSES BY COST CENTER

### General Expenses by Cost Center - 2017



General Expenses by Cost Center	US\$	%
Financial administration	29.252,76	16%
Programs and Projects	127.092,74	69%
Communication and Fundraising	27.234,99	15%
<b>TOTAL</b>	<b>183.580,49</b>	<b>100%</b>

## BALANCE SHEET 2017 TERRA LIVRE - EXPENSES BY COST CENTER

MONETARY TRANSACTIONS (in money)	Jan	Feb	Mar	Apr	May	Jun	Jul	Aug	Sep	Oct	Nov	Dec	TOTAL
Financial administration	1.106,81	1.218,05	1.213,02	1.454,03	1.874,88	1.299,46	2.680,01	1.463,86	1.500,17	1.738,62	2.231,03	3.531,00	21.310,94
Programs and Projects	5.282,30	5.963,49	8.009,70	7.324,93	8.284,67	9.679,82	8.425,23	9.091,78	6.169,23	6.887,03	5.739,47	10.071,08	90.928,73
Communication and Fundraising	778,78	473,60	2.243,30	492,10	477,38	488,17	366,63	460,63	196,96	0,78	53,48	154,54	6.186,35
Total Parcial (Transações Monetárias)	7.167,89	7.655,14	11.466,02	9.271,06	10.636,93	11.467,45	11.471,87	11.016,27	7.866,36	8.626,43	8.023,98	13.756,62	118.426,02

NON-MONETARY TRANSACTIONS (gratuity in materials or services)	Jan	Feb	Mar	Apr	May	Jun	Jul	Aug	Sep	Oct	Nov	Dec	TOTAL
Financial administration	889,11	889,36	889,36	889,36	889,36	2.369,69	831,81	980,57	889,36	1.122,72	831,81	1.151,51	12.624,02
Programs and Projects	1.521,51	3.262,12	22.497,83	4.321,96	2.522,05	725,72	922,72	1.836,31	2.299,54	3.140,49	3.021,08	831,81	46.903,14
Communication and Fundraising	1.151,51	1.151,51	6.817,52	1.151,51	1.151,51	1.151,51	1.151,51	1.151,51	1.151,51	1.151,51	3.630,30	4.074,84	24.886,25
Total Partial (Non-Monetary Donations)	3.562,13	5.302,99	30.204,71	6.362,83	4.562,92	4.246,92	2.906,04	3.968,39	4.340,41	5.414,72	7.483,19	6.058,16	84.413,41
Monthly Total (non-monetary + monetary)	10.730,02	12.958,13	41.670,73	15.633,89	15.199,85	15.714,37	14.377,91	14.984,66	12.206,77	14.041,15	15.507,17	19.814,78	202.839,43